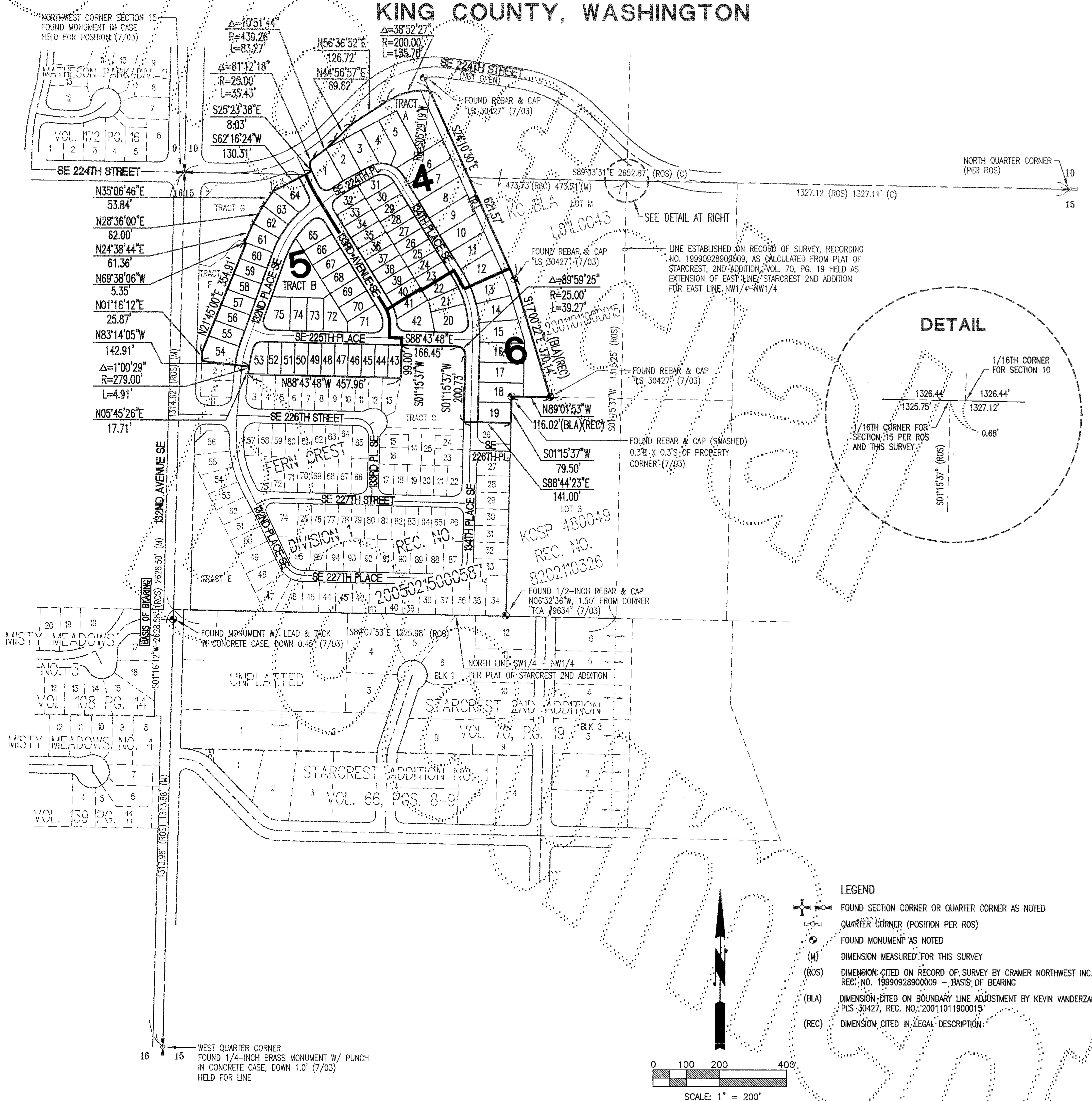


2005081600 1191

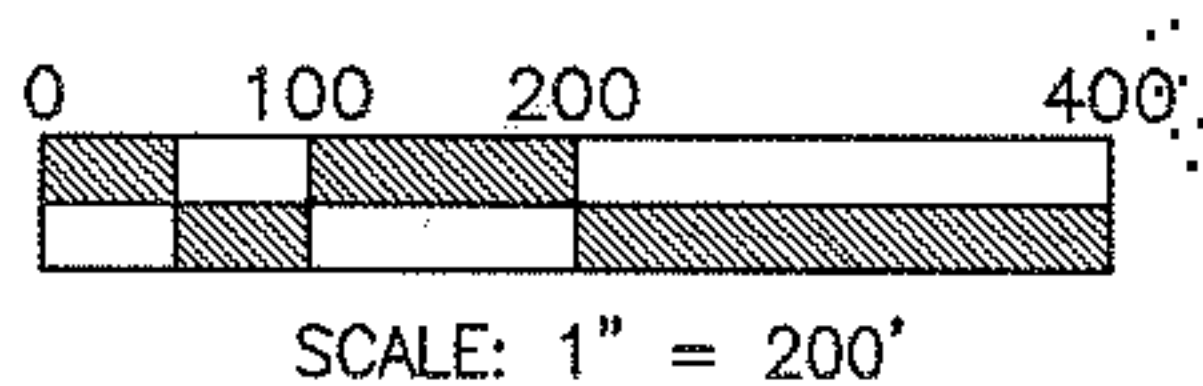
VOLUME/PAGE
229 / 068

FERN CREST DIVISION 2

A REPLAT OF TRACT "M" OF FERN CREST DIVISION 1
IN THE SW1/4 OF SW1/4 OF SEC. 10 AND THE NW1/4 OF NW1/4 OF SEC. 15,
ALL IN TOWNSHIP 22 NORTH, RANGE 5 EAST, WILLAMETTE MERIDIAN
KING COUNTY, WASHINGTON



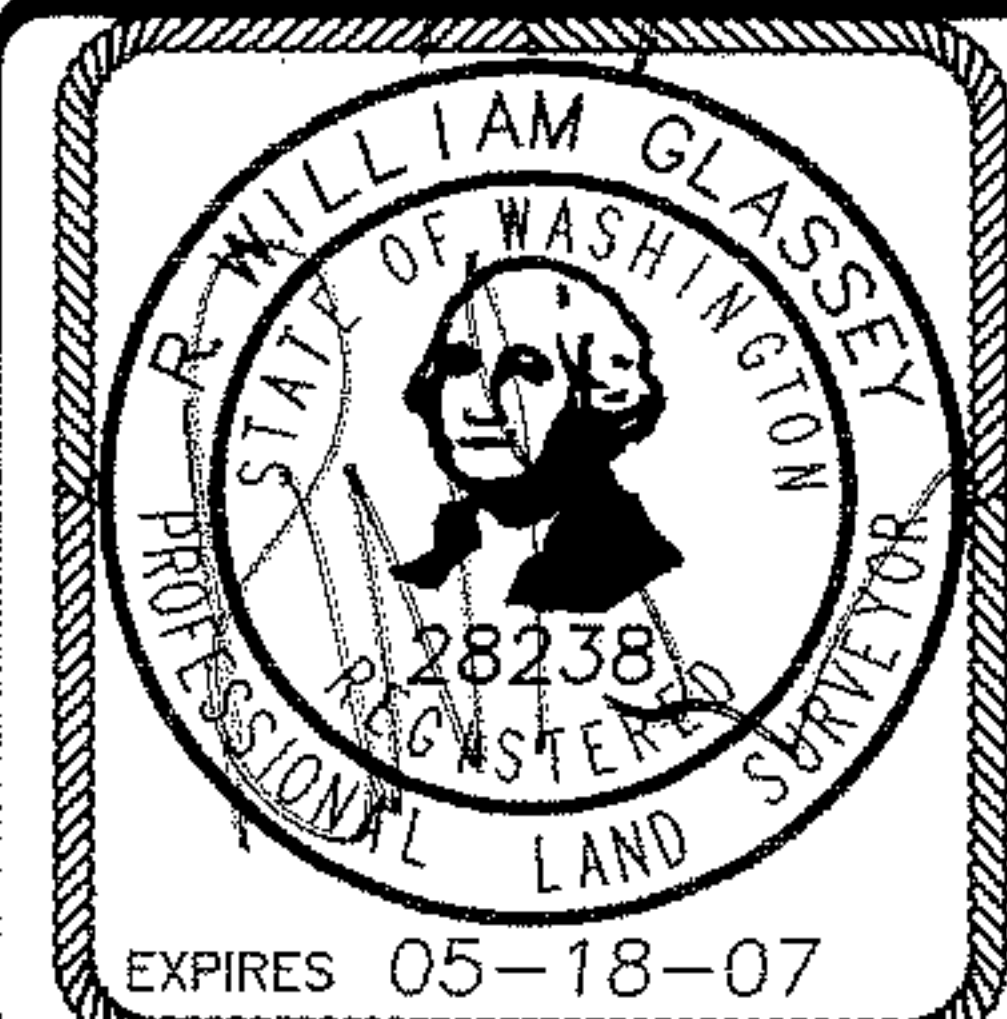
- LEGEND**
- ✚ FOUND SECTION CORNER OR QUARTER CORNER AS NOTED
 - QUARTER CORNER (POSITION PER ROS)
 - FOUND MONUMENT AS NOTED
 - (M) DIMENSION MEASURED FOR THIS SURVEY
 - (ROS) DIMENSION CITED ON RECORD OF SURVEY BY CRAMER NORTHWEST INC. REC. NO. 1999092890009 - BASIS OF BEARING
 - (BLA) DIMENSION FITTED ON BOUNDARY LINE ADJUSTMENT BY KEVIN VANDERZANDEN, PLS. 30427, REC. NO. 20011011900015
 - (REC) DIMENSION CITED IN LEGAL DESCRIPTION



DDES FILE NO. L01P0025

RECORDING CERTIFICATE:
Recording No. 20050816001191
Filed for record at the request of the King County Council this day of August, 2005, at 55 minutes past 11 A. m. and recorded in Volume 229 of Plats at pages 68 through 73, records of King County, Washington.
DIVISION OF RECORDS AND ELECTIONS
Manager _____ Superintendent of Records _____

LAND SURVEYOR'S CERTIFICATE:
I hereby certify that this plat of FERN CREST DIVISION 2 is based upon an actual survey and subdivision of Sections 10 & 15, Township 22 North, Range 5 East, W.M., that the courses and distances are shown correctly thereon; that the monuments will be set and the lot and block corners will be staked correctly on the ground as construction is completed and that I have fully complied with the provisions of the platting regulations.
R. WILLIAM GLASSEY, PLS. NO. 28238 Date 18 JULY 2005



Barghausen Consulting Engineers, Inc.
Civil Engineering, Land Planning, Surveying, Environmental Services
18215 72nd Avenue South Kent, WA., 98032
Telephone: (425) 251-6222 Fax: (425) 251-8782
SW1/4 OF SW1/4, SECTION 10 & NW1/4 OF NW1/4, SECTION 15, T22N-R5E, W.M.
SHEET 1 OF 6

File: P:\11000s\11116\survey\plate\Division 2\4j116p21.dwg Date/Time: 07/18/2005 07:50 Scale: 1=200 Kramson Xrefs: